



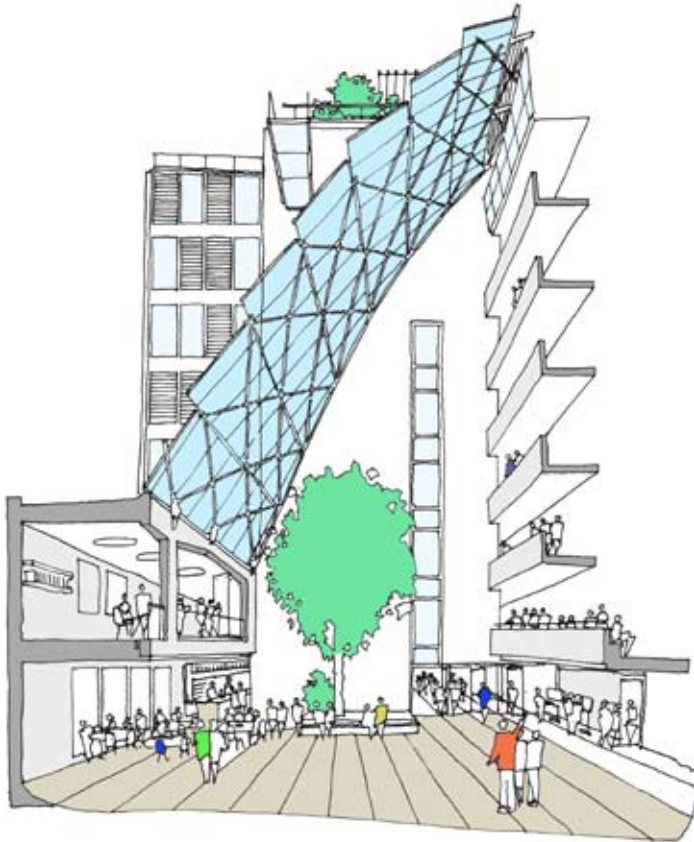
LONDON SCHOOL OF ECONOMICS & POLITICAL SCIENCE, 24 KINGSWAY MASTERPLAN, LONDON

Pringle Richards Sharratt were engaged by the LSE to carry out a masterplan for expansion of the LSE's estate northwards through the acquisition of 24 Kingsway.

The brief was to assess the suitability of a former government building for conversion to the LSE's uses, including additional teaching space, lecture theatres, departmental offices and a small amount of residential accommodation.

The study included an appraisal of structure and services, fire engineering, planning and rights of light issues, together with a comprehensive cost appraisal.

The LSE has now purchased the building.



Left: perspective view of proposed new atrium

**London School of Economics
& Political Science**

11,300 m²
£22.4 million
2004