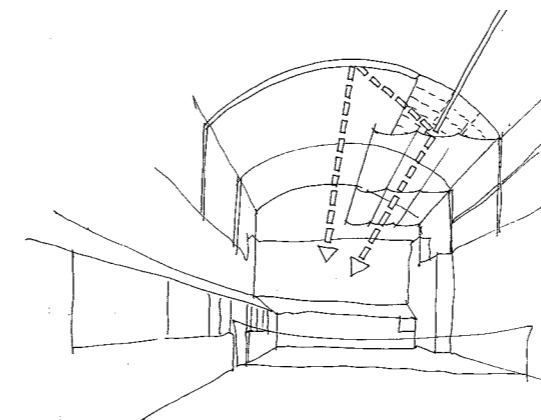


Above: diagram showing path of natural ventilation



Above: diagram showing natural daylighting strategy

Left: court in play

Middlesex University commissioned the practice to extend their existing sports and fitness facilities on their Hendon Business Campus.

Planning consent was obtained for a scheme which included a real tennis court, 7 squash courts and 2 outdoor tennis courts, together with an indoor and an outdoor aerobics studio and new social and changing room facilities. Funding dictated a phased approach and the first phase comprising the real tennis court, 2 outdoor tennis courts, and the new social and changing room facilities this was completed and formally opened by HRH the Earl of Wessex in January 2000 – becoming the first Real Tennis Court of the new Millennium.

Natural ventilation introduced through the lower level galleries is driven by natural buoyancy and the stack effect to the upper levels of the court where opening vents allow it to be drawn out, thereby drawing in cool fresh air at the lower level. The exposed mass of the court walls and floor help stabilize and maintain temperatures while underfloor heating maintains the temperature on court during the winter months.

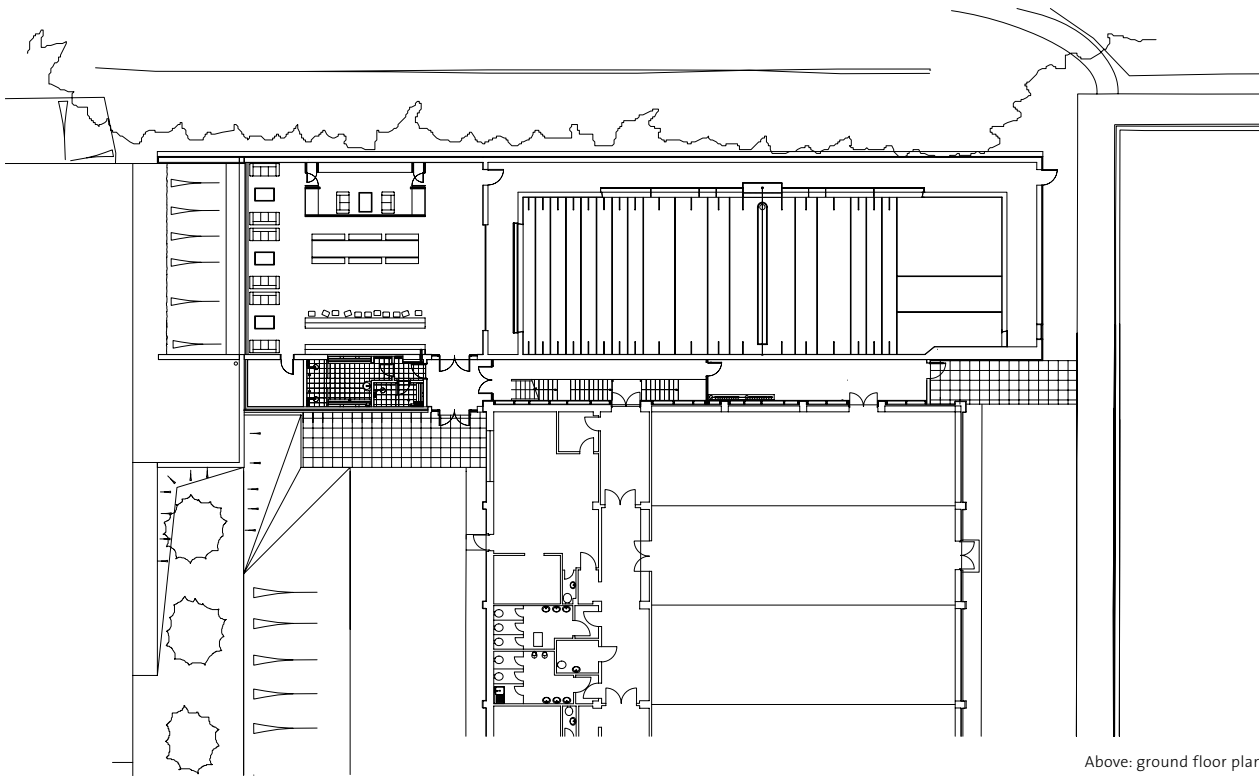
The use of natural daylight is maximised by means of insulated light diffusing panels that form the walls above the court playline, introducing gentle shadow-free daylight onto the court. This is supplemented by a large north facing rooflight that extends the length of the court with a bank of horizontal blinds that pull out beneath it to reflect skylight up onto the soffit, helping to equalize the light balance.

State of the art CCTV cameras were installed around the court as part of the teaching regime used by the professionals.

The court and facilities have since been used to host a number of International competitions.

**“Its graceful roof structure and sensitive use of colour and materials proves that a modern court can easily match the elegance of its predecessors.”**

RIBA Journal



Above: ground floor plan showing real tennis court with adjacent bar and changing rooms, adjoining the existing sports facility

**Middlesex University**  
1036 m<sup>2</sup>  
£1.8 million  
1997-1999