



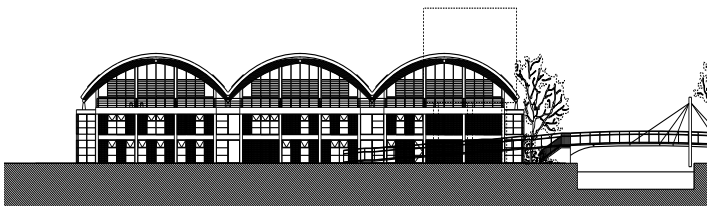
WYKE ROAD BUS GARAGE, LONDON

The new bus garage for London Buses is part of the Olympics relocation project, along with the West Ham garage designed by PRS. It will also be an environmentally sustainable bus garage, exceeding the Mayors target of 20% on-site renewables generation, utilising combined heat and power plant and biomass boilers.

Part of the roof is a green roof, as part of the SUDS drainage scheme and the bio-diversity of the former brownfield site has been improved considerably through extensive landscaping, particularly along the canal.

The proposed bus garage is essential in order to facilitate the effective and sustainable relocation of the existing First Group Waterden Road bus garage operations, which are set to be vacated to release land for the implementation of the Olympic Park Development and Legacy proposals. The new garage will be on a site flanking the Hertford Union Canal and close to Victoria Park.

Within an environment of ever increasing demand for bus services and with a continuing upwards trend in bus patronage within Greater London, the network capacity provided by the existing garages also needs to be upgraded. This garage will provide a capacity of 210 buses and will be operated by the First Group. The proposal forms part of the wider regeneration programme for the formerly highly industrial area, and complements proposed mixed use developments on the adjoining site.



Transport for London
£15 million
2006-2010