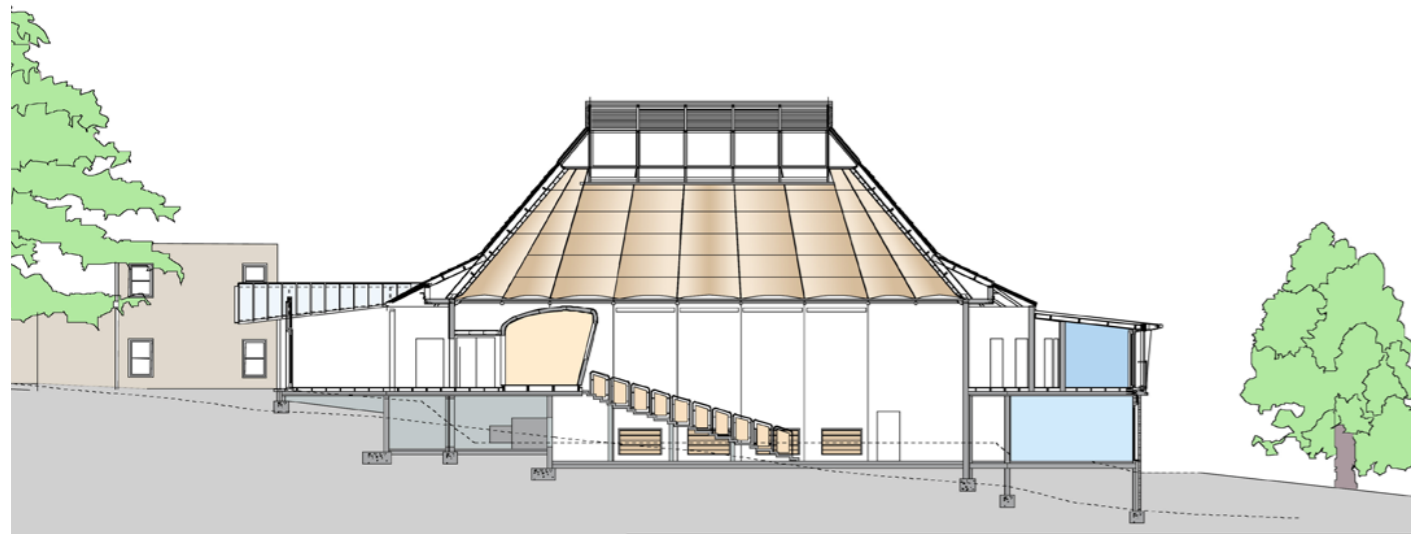


Cross section showing the undercroft beneath the perimeter teaching spaces



Long section showing the auditorium, following the slope of the landscape.



Left: western red cedar shingle roof and timber cladding



Shrewsbury School
 1,254 m²
 £1.4 million
 1991-2005
 RIBA Award for Architecture 2001, Civic Trust Award Commendation 2003, Brick Award Commendation 2002, shortlisted for 2001 BCIA Awards and Timber Industry Awards, nominated for the RIBA Sustainability Award, Shrewsbury & Atcham Design & Heritage Award 2001.



PRINCIPLE RICHARDS SHARRATT ARCHITECTS Studio 11 Canterbury Court Kemington Park 1 Brixton Road London SW9 6DE T +44 (0)20 7793 2828 F +44 (0)20 7793 2829 mailbox@prsarchitects.com www.prsarchitects.com



“Delivered within a budget considerably lower than buildings with similarly high acoustic specifications, this is an excellent new teaching facility for Shrewsbury School and a valuable addition to the cultural life of Shrewsbury itself.”
The RIBA award citation

This building is a music school and auditorium for Shrewsbury School. It includes teaching and rehearsal rooms, ensemble/performance spaces and specialist resource rooms. The accommodation also includes teaching facilities for both traditional musical instruments, percussion, electronic and amplified music, as well as recording facilities. The building has an elliptical form, with practice and teaching rooms surrounding a main ensemble room, which can seat an audience of 200 people. Seating can be retracted to provide a rehearsal space for a full orchestra. The circulation system creates an acoustic buffer zone between the performance space in the centre of the building and the teaching rooms around the perimeter, and the form of the building follows the profile of the existing landscape, using the existing slope of the site to create a natural auditorium.



Above: rooflit internal circulation route with storage for musical instruments

“This is a building that lifts the spirits ... it is contemporary yet it has the feeling of always having been there – it’s a timeless building which has roots ... organic, not genetically modified!”
The Prince of Wales when he opened the building in February 2001

“The design is a lucid response to context and programme fused with the resolution of the acoustic and wider environmental questions.” At the recent inspection the inspectors commented “with its excellent auditorium and light airy classrooms and practice rooms it will clearly give a great boost to music making at Shrewsbury.”
Architecture Today