

[Home](#) » [Winners](#)

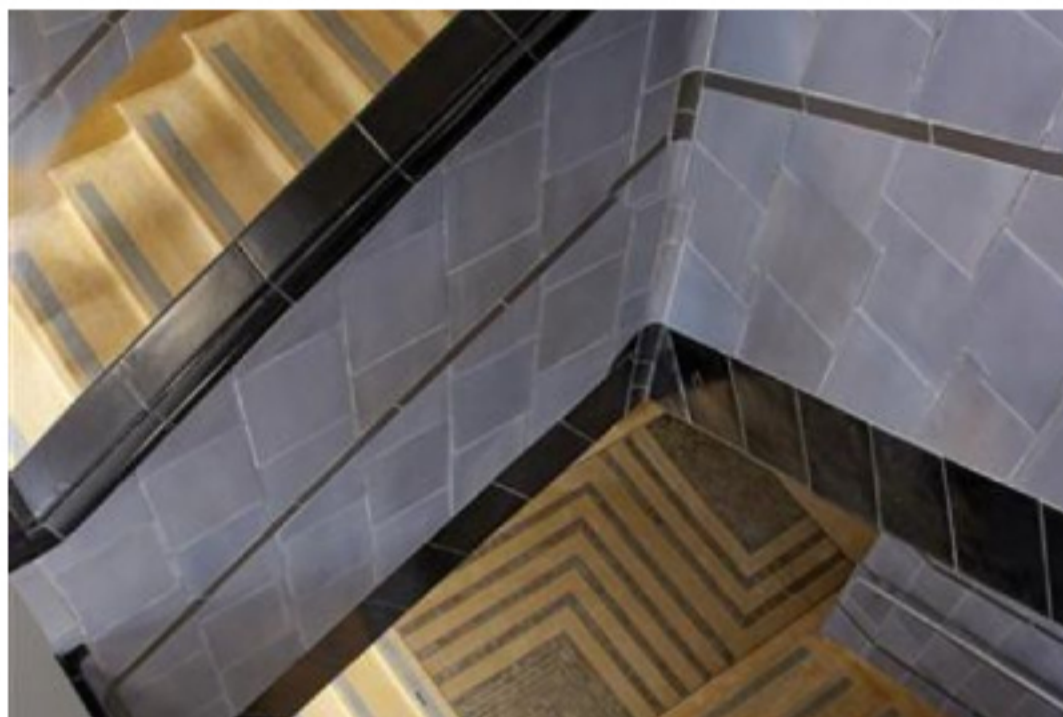
[Winners Overview](#) >

[Winners by Region](#) >

[Winners by Award Type](#) >

[Awards Brochure](#) >

Poplar Baths



Information about this scheme

After nearly 30 years standing empty and delivered as part of a wider public private partnership, Poplar Baths leisure centre houses a large sports hall, community pools, gym, two studios for exercise classes, a roof-top multi-use games area, dry and wet changing areas, staff facilities including a prayer/quiet room, play area and café with small exhibition space.. Poplar Baths opened in 1934 and remained a much loved local landmark until closure in 1986 after a section of the building fell into the pool hall. The Grade II listed building had been derelict since 1994 and for many years featured prominently on the building at risk register. The remaining 1930s curved wall tiles, metal banding, black stone inlay and terrazzo flooring have required careful restoration work. These have been reinstalled in the reception area to recreate the impressive entrance hall. The bath's original plunge pool, unique in its configuration and form, has been entirely removed and re-sited within the new interior. Fixtures and fittings have been carefully matched to those salvaged during the redesign and reconstruction, including clocks, light fittings, door handles and signage. A feature bank has been created to store historic features for future display and reference. The Grade II listed building was achieved through strong community support, as Poplar Baths has remained at the forefront of local interest since its relatively sudden closure. This prominent building has now been returned to its rightful status as an inviting, purposeful and valued destination

Application Type
AABC Conservation

Level of Award
Commendation

Region
Greater London

Local Authority Area
Tower Hamlets

Credits

Client
London Borough of Tower Hamlets

Main Contractor
Guildmore Ltd

Architect
Pringle Richards Sharratt

Structural Engineer
PEP Civil and Structures Ltd

M&E Engineers
Peter Deer and Associates

Planning Consultant
Collins & Coward

Project Manager
Guildmore Ltd

Cost Consultant
Clarkson & Alliance

Operator
Greenwich Leisure Limited

Primary Use Class
Class D2 - Assembly and Leisure