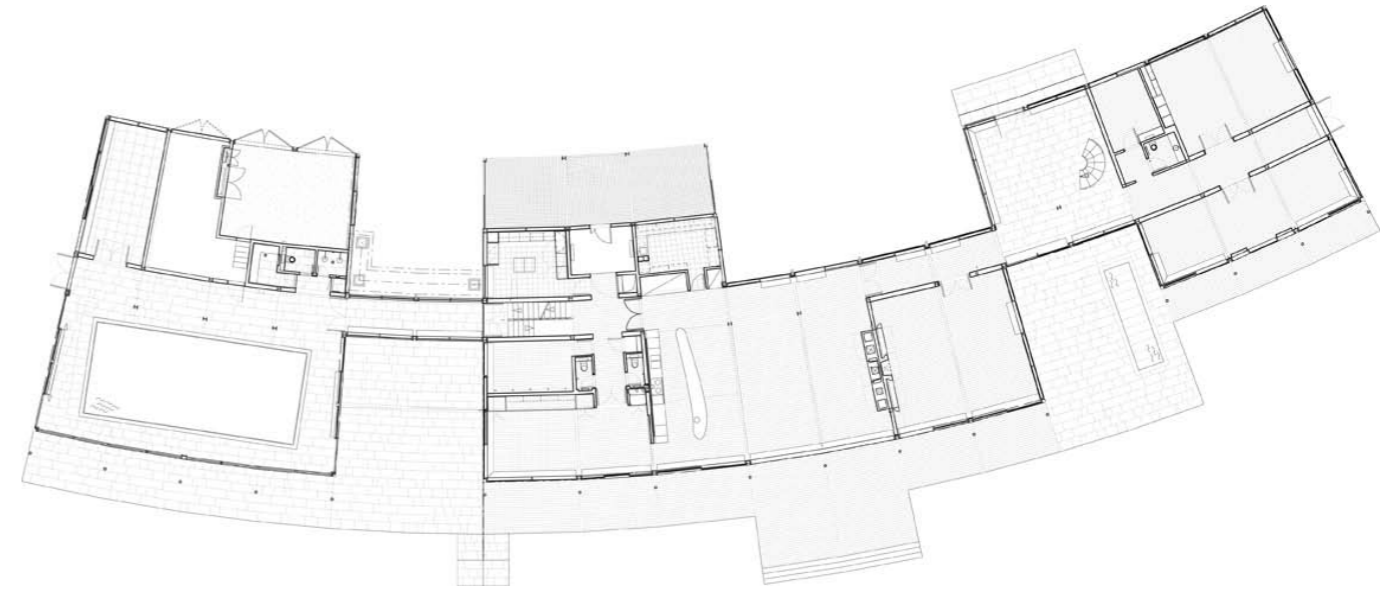




HOUSE AT MONKS HORTON, FOLKESTONE, KENT



Left: double volume living space with bridge walkway



Above: ground floor plan
Below: indoor pool



This new house for a private client is set in extensive grounds in the Kent countryside.

The house is anchored on the site between groups of mature trees and overlooks two newly-formed lakes and open countryside. The plan of the two storey building is organised along a gentle curve and is articulated into three parts.

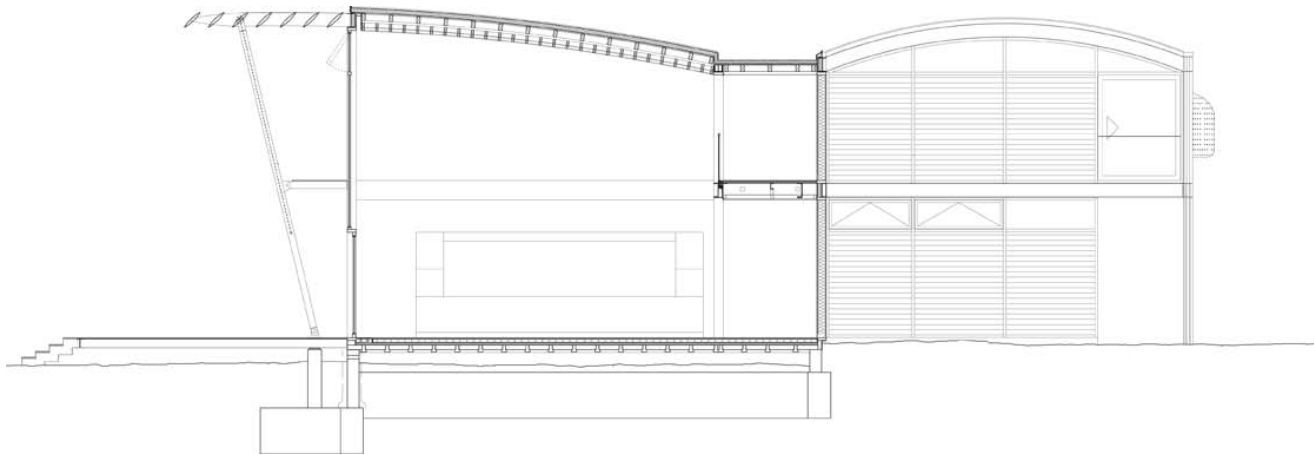
The first part contains guest bedrooms and bathrooms, a snooker room and study. The second part contains family bedrooms and bathrooms, a sitting room, double height dining area, kitchen, playroom and wine cellar. The third contains a swimming pool, gym and garage.

The stone floored double height entrance hall separates the family and guest accommodation, and a glazed link along the north of an external court separates the pool house.

All three elements are connected at ground and first floor level by a curved circulation spine, which extends beyond the building and acts as an organisational structure to the newly formed garden spaces, which extend into the landscape on either side.

All south facing rooms open onto timber decked terraces at ground level or projecting balconies at first floor level. Solar shading is provided by a combination of balconies and horizontal timber louvres.

The building has an exposed steel frame structure which is infilled with either oak framed panels or glass. The shallow curved roof forms are timber panelled on the interior and externally clad in terne coated stainless steel.



Above, top: section showing canopy and central circulation system
Above: landscaped courtyard

1,100 m²
1997-2001